

- 1
- 2
- 3
- 4
- 5
- 6
- 7
- 8
- 9
- 10
- 11
- 12
- 13
- 14
- 15
- 16
- 17
- 18

MATERIAL

Anodised aluminium black colour.

INDEX

White laser-engraved line.

STANDARD EXECUTION

H8 reamed hole.

Assembly by means of a supplied stainless steel transversal grub screw with hexagon socket.

FEATURES AND APPLICATIONS

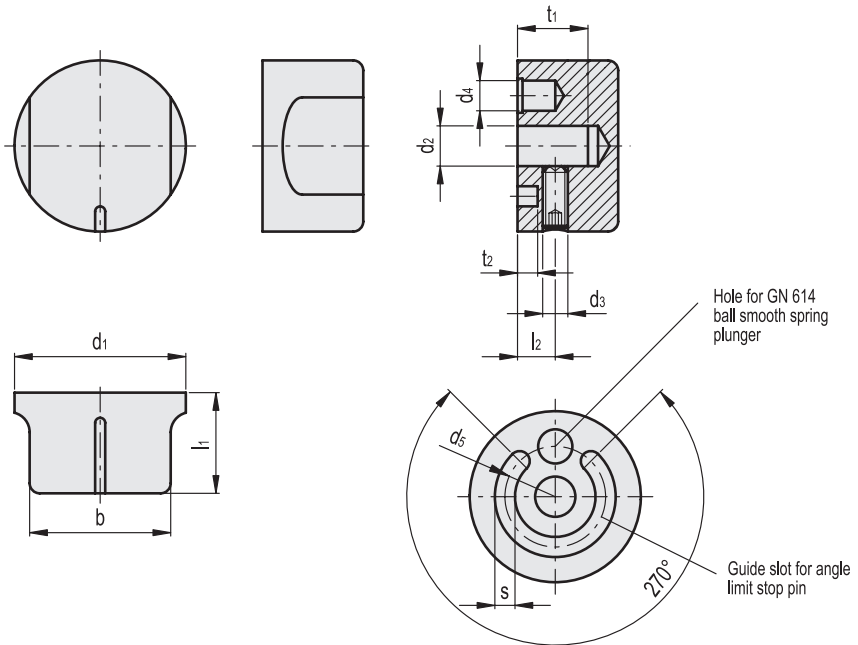
The two special flat faces of GN 729 control knobs allow a safe and comfortable grip. For this reason the knobs are usually used for applications which require a rotation within a 180° angle.

MANOEUVRE ANGLE LIMITATION

A limited manoeuvre angle is possible by fitting stop pins in the rear guide slot.

ACCESSORIES ON REQUEST

For clicking operation, we suggest to use smooth ball spring plungers GN 614 (see page 964) into d1 bore.



Conversion Table	
1 mm = 0.039 inch	
d1	
mm	inch
34	1.34
42	1.65

METRIC

Code	Description	d1	d2 H8	d3	s+0.3+0.1	d4	d5	l1	l2	b	tmin	t2+0.2	⚖
GN.30811	GN 729-34-B6	34	6	M5	4	6	20	20	7.5	28	14	4	45
GN.30821	GN 729-42-B8	42	8	M5	4	6	30	22	7.5	35	16	4	72

Control elements